

<b>High Speed Rail Corridor</b> Existing Recommended	<b>Fixed Guideway</b> Existing Needs Improvement Recommended	<b>Rail Corridor</b> Active Inactive Recommended
<b>Operational Strategies</b> Existing Needs Improvement Recommended	<b>Stations</b> Existing Needs Improvement Recommended	<b>Stations with Park and Ride Lot</b> Existing Needs Improvement Recommended
<b>Bus Park and Ride Lot</b> Existing Needs Improvement Recommended	<b>Intermodal Connector</b> Existing Recommended	<b>Interchanges with Managed Lanes Access</b> Existing Needs Improvement Recommended
<b>Grade Separations</b> Existing Needs Improvement Recommended	<b>Interchanges</b> Existing Needs Improvement Recommended	

0 3 6 12 Miles

Sheet 3 of 5

Base map date: January 4, 2017

Refer to CTP document for more details

**Public Transportation and Rail Map**

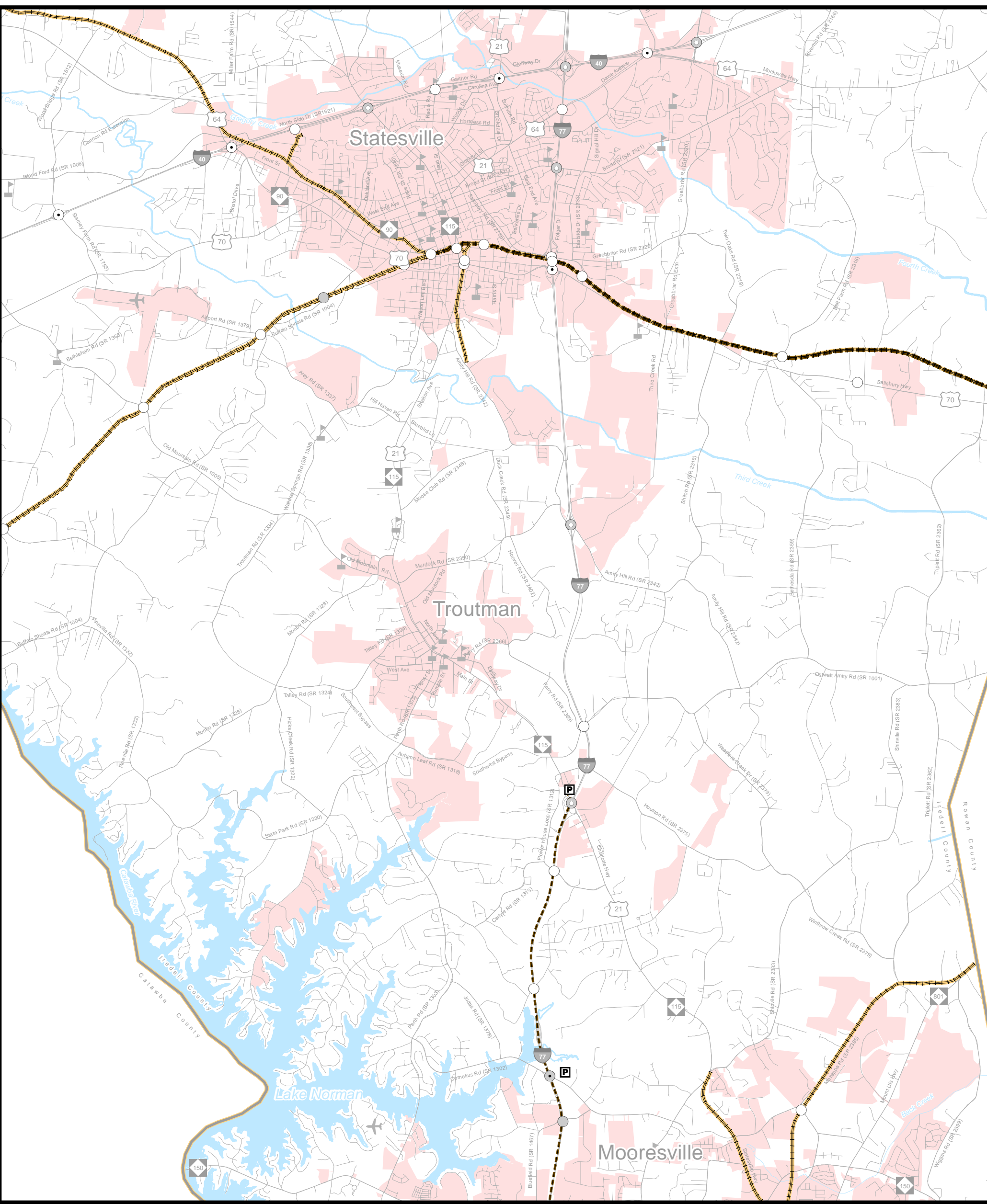
**CRTPO**  
charlotte regional transportation planning organization

**AMENDED**

**Charlotte Regional Transportation Planning Organization**  
North Carolina

**Comprehensive Transportation Plan**  
Plan date: January 18, 2017  
Revision date: October 17, 2018





<p><b>High Speed Rail Corridor</b></p> <ul style="list-style-type: none"> <li>Existing</li> <li>Recommended</li> </ul> <p><b>Operational Strategies</b></p> <ul style="list-style-type: none"> <li>Existing</li> <li>Needs Improvement</li> <li>Recommended</li> </ul> <p><b>Bus Park and Ride Lot</b></p> <ul style="list-style-type: none"> <li>Existing</li> <li>Needs Improvement</li> <li>Recommended</li> </ul> <p><b>Grade Separations</b></p> <ul style="list-style-type: none"> <li>Existing</li> <li>Needs Improvement</li> <li>Recommended</li> </ul>	<p><b>Fixed Guideway</b></p> <ul style="list-style-type: none"> <li>Existing</li> <li>Needs Improvement</li> <li>Recommended</li> </ul> <p><b>Stations</b></p> <ul style="list-style-type: none"> <li>Existing</li> <li>Needs Improvement</li> <li>Recommended</li> </ul> <p><b>Intermodal Connector</b></p> <ul style="list-style-type: none"> <li>Existing</li> <li>Recommended</li> </ul> <p><b>Interchanges</b></p> <ul style="list-style-type: none"> <li>Existing</li> <li>Needs Improvement</li> <li>Recommended</li> </ul>	<p><b>Rail Corridor</b></p> <ul style="list-style-type: none"> <li>Active</li> <li>Inactive</li> <li>Recommended</li> </ul> <p><b>Stations with Park and Ride Lot</b></p> <ul style="list-style-type: none"> <li>Existing</li> <li>Needs Improvement</li> <li>Recommended</li> </ul> <p><b>Interchanges with Managed Lanes Access</b></p> <ul style="list-style-type: none"> <li>Existing</li> <li>Needs Improvement</li> <li>Recommended</li> </ul>
--	--	--

0 0.5 1 2 Miles

Sheet 3A of 5

Base map date: January 4, 2017

Refer to CTP document for more details

**Public Transportation and Rail Map Inset A**

AMENDED

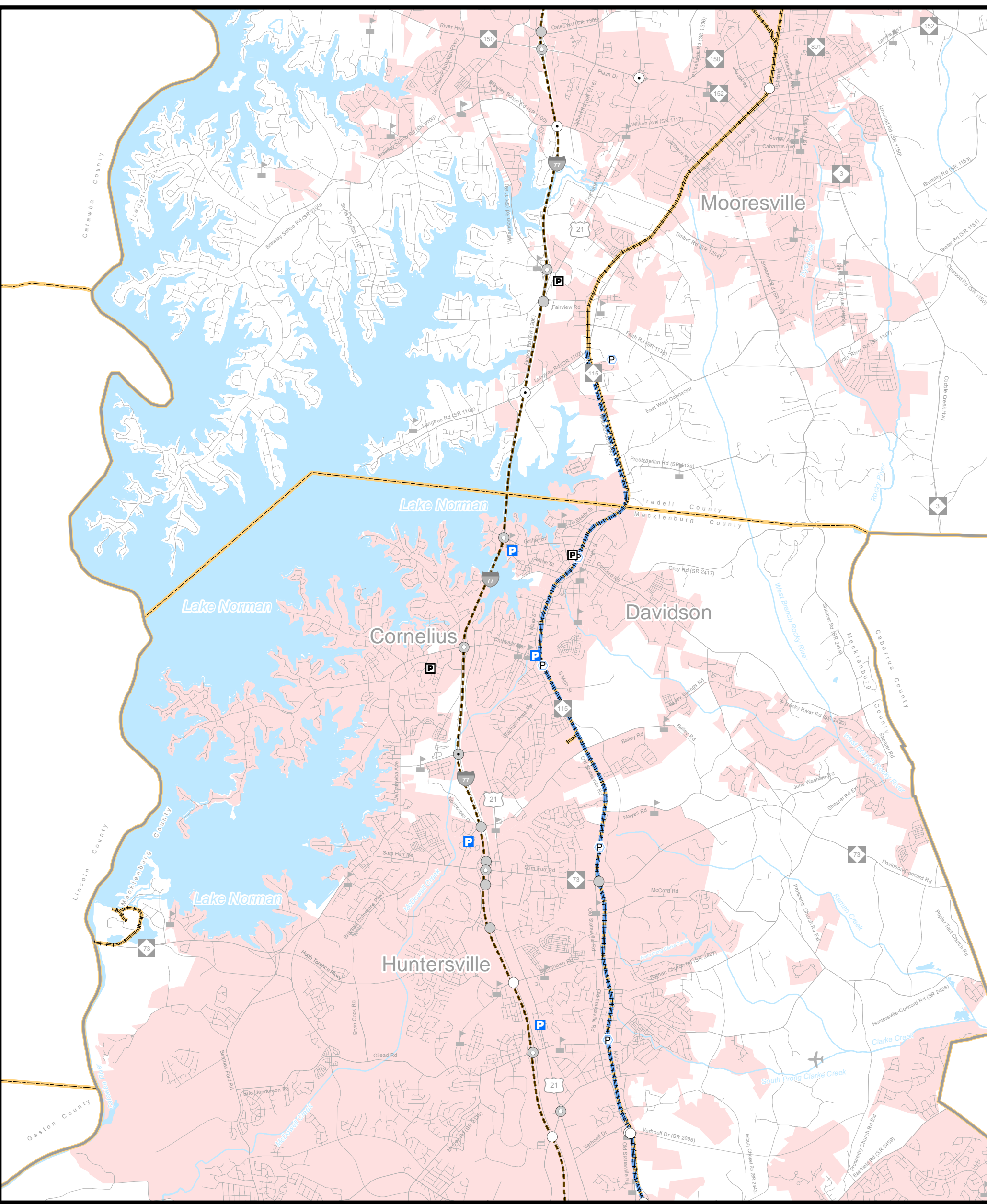
**Charlotte Regional Transportation Planning Organization**

North Carolina

**Comprehensive Transportation Plan**

Plan date: January 18, 2017  
Revision date: October 17, 2018





<b>High Speed Rail Corridor</b> Existing Recommended	<b>Fixed Guideway</b> Existing Needs Improvement Recommended	<b>Rail Corridor</b> Active Inactive Recommended
<b>Operational Strategies</b> Existing Needs Improvement Recommended	<b>Stations</b> Existing Needs Improvement Recommended	<b>Stations with Park and Ride Lot</b> Existing Needs Improvement Recommended
<b>Bus Park and Ride Lot</b> Existing Needs Improvement Recommended	<b>Intermodal Connector</b> Existing Recommended	<b>Interchanges with Managed Lanes Access</b> Existing Needs Improvement Recommended
<b>Grade Separations</b> Existing Needs Improvement Recommended	<b>Interchanges</b> Existing Needs Improvement Recommended	

0 0.5 1 2 Miles

Sheet 3B of 5

Base map date: January 4, 2017

Refer to CTP document for more details

## Public Transportation and Rail Map Inset B

AMENDED

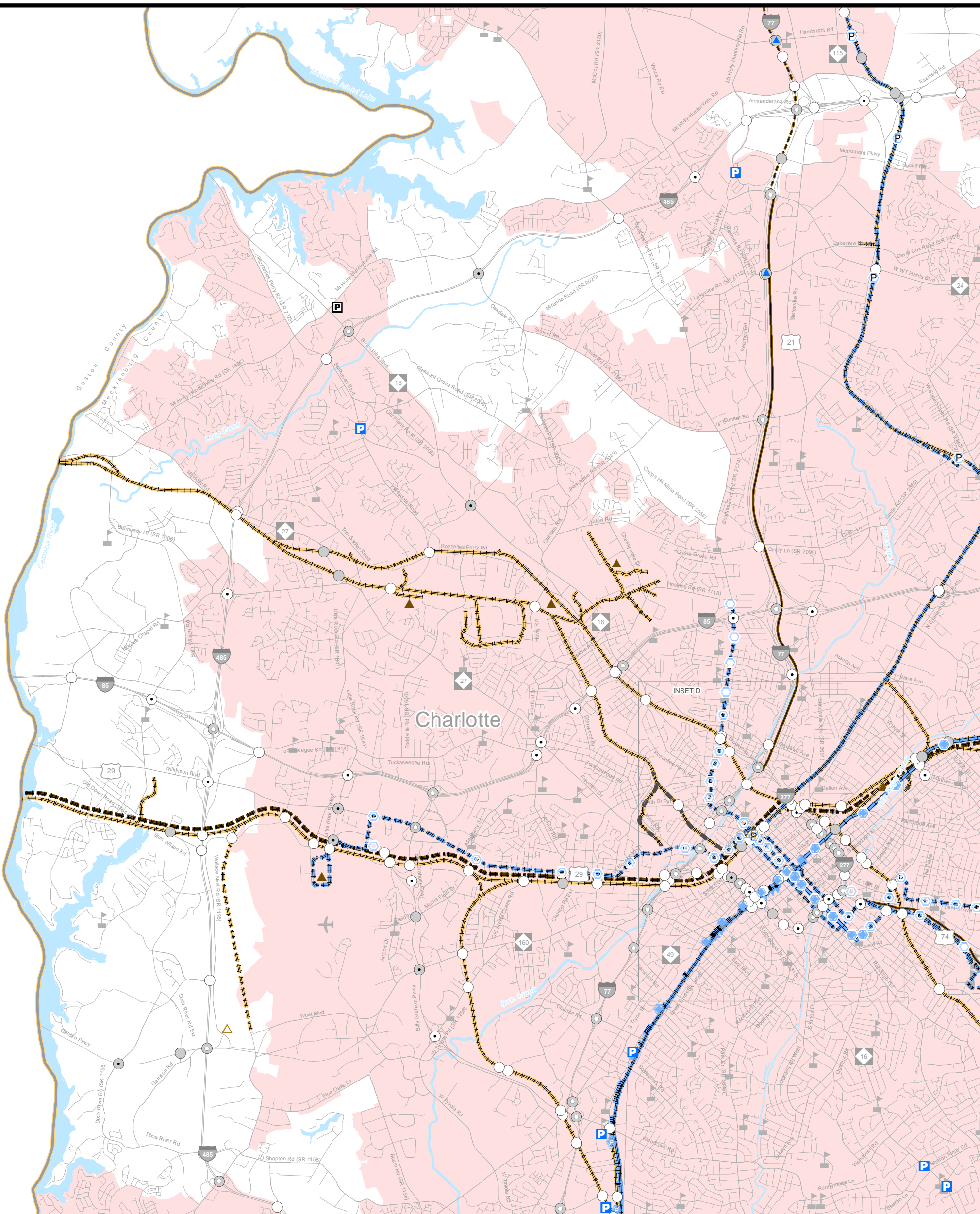
Charlotte Regional Transportation Planning Organization

North Carolina

## Comprehensive Transportation Plan

Plan date: January 18, 2017  
Revision date: October 17, 2018





<b>High Speed Rail Corridor</b> Existing Recommended	<b>Fixed Guideway</b> Existing Needs Improvement Recommended	<b>Rail Corridor</b> Active Inactive Recommended
<b>Operational Strategies</b> Existing Needs Improvement Recommended	<b>Stations</b> Existing Needs Improvement Recommended	<b>Stations with Park and Ride Lot</b> Existing Needs Improvement Recommended
<b>Bus Park and Ride Lot</b> Existing Needs Improvement Recommended	<b>Intermodal Connector</b> Existing Recommended	<b>Interchanges with Managed Lanes Access</b> Existing Needs Improvement Recommended
<b>Grade Separations</b> Existing Needs Improvement Recommended	<b>Interchanges</b> Existing Needs Improvement Recommended	

0 0.5 1 2 Miles

Sheet 3C of 5

Base map date: January 4, 2017

Refer to CTP document for more details

## Public Transportation and Rail Map Inset C

Charlotte Regional Transportation Planning Organization

AMENDED

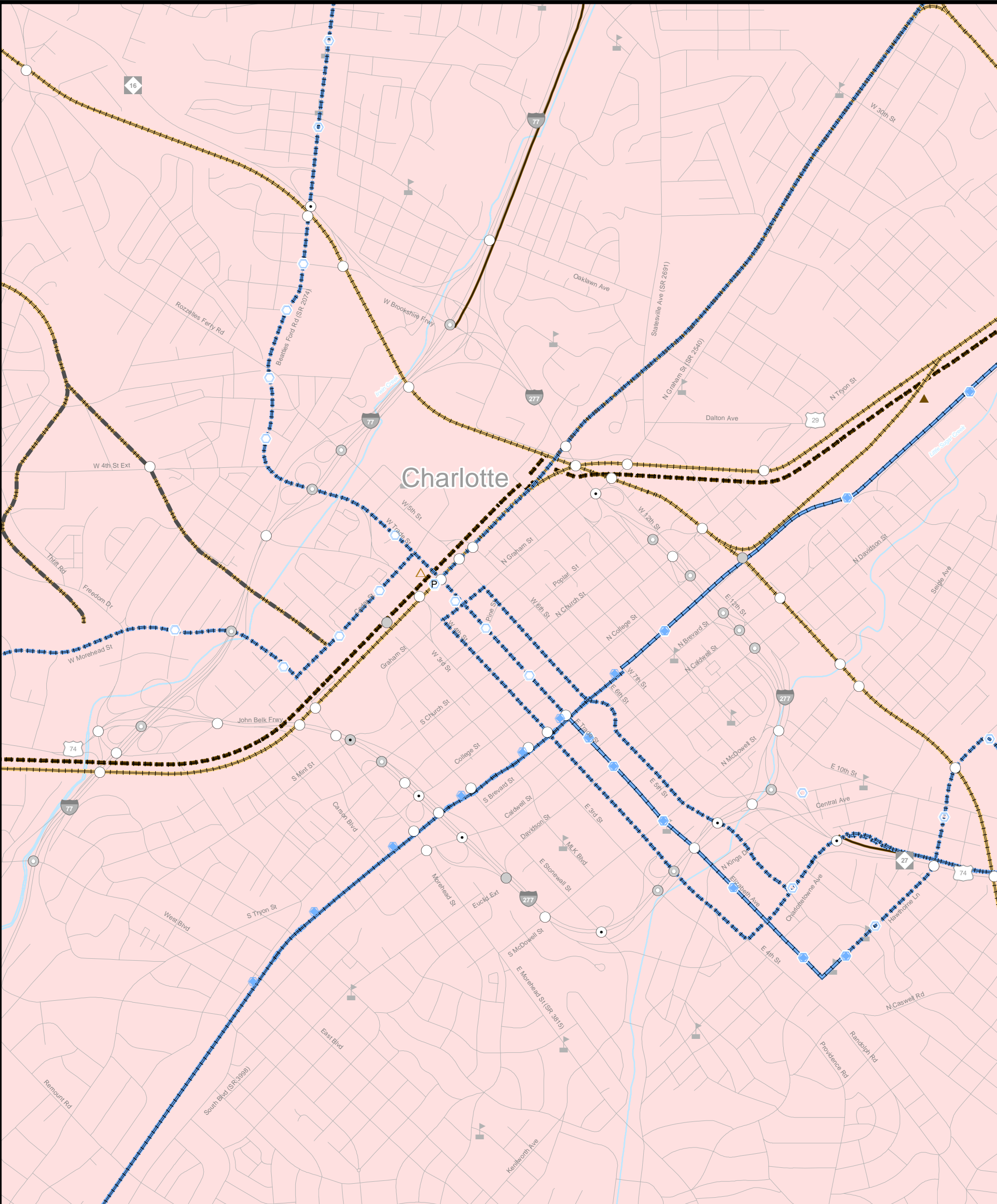
Charlotte Regional Transportation Planning Organization

North Carolina

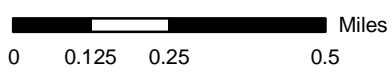
### Comprehensive Transportation Plan

Plan date: January 18, 2017  
Revision date: October 17, 2018





<b>High Speed Rail Corridor</b> Existing Recommended	<b>Fixed Guideway</b> Existing Needs Improvement Recommended	<b>Rail Corridor</b> Active Inactive Recommended
<b>Operational Strategies</b> Existing Needs Improvement Recommended	<b>Stations</b> Existing Needs Improvement Recommended	<b>Stations with Park and Ride Lot</b> Existing Needs Improvement Recommended
<b>Bus Park and Ride Lot</b> Existing Needs Improvement Recommended	<b>Intermodal Connector</b> Existing Recommended	<b>Interchanges with Managed Lanes Access</b> Existing Needs Improvement Recommended
<b>Grade Separations</b> Existing Needs Improvement Recommended	<b>Interchanges</b> Existing Needs Improvement Recommended	



Sheet 3D of 5

Base map date: January 4, 2017

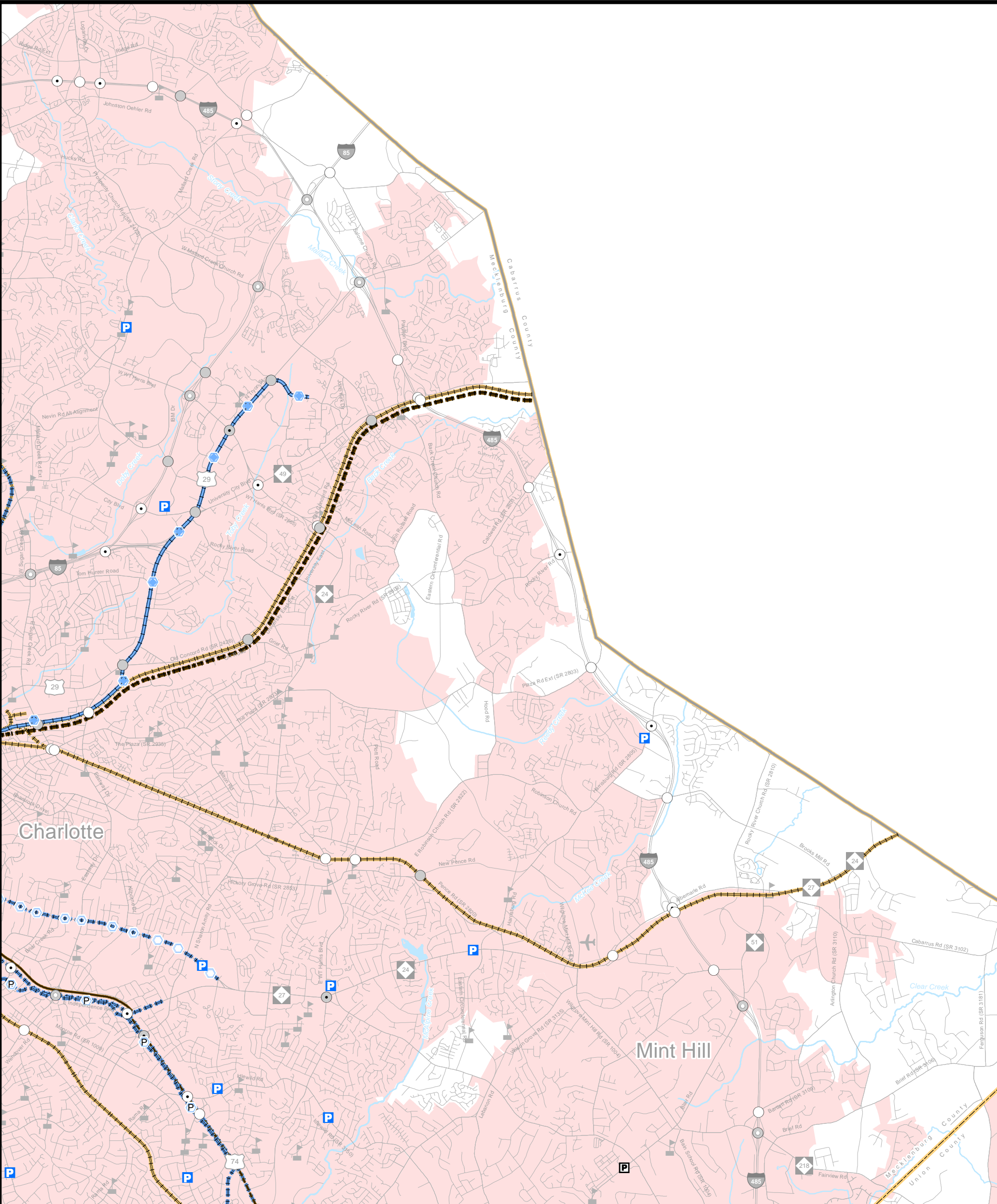
Refer to CTP document for more details

**Public Transportation and Rail Map Inset D**

**AMENDED**  
**Charlotte Regional Transportation Planning Organization**  
 North Carolina

**Comprehensive Transportation Plan**  
 Plan date: January 18, 2017  
 Revision date: October 17, 2018





<b>High Speed Rail Corridor</b> Existing Recommended	<b>Fixed Guideway</b> Existing Needs Improvement Recommended	<b>Rail Corridor</b> Active Inactive Recommended
<b>Operational Strategies</b> Existing Needs Improvement Recommended	<b>Stations</b> Existing Needs Improvement Recommended	<b>Stations with Park and Ride Lot</b> Existing Needs Improvement Recommended
<b>Bus Park and Ride Lot</b> Existing Needs Improvement Recommended	<b>Intermodal Connector</b> Existing Recommended	<b>Interchanges with Managed Lanes Access</b> Existing Needs Improvement Recommended
<b>Grade Separations</b> Existing Needs Improvement Recommended	<b>Interchanges</b> Existing Needs Improvement Recommended	

0 0.5 1 2 Miles

Sheet 3E of 5

Base map date: January 4, 2017

Refer to CTP document for more details

## Public Transportation and Rail Map Inset E

AMENDED

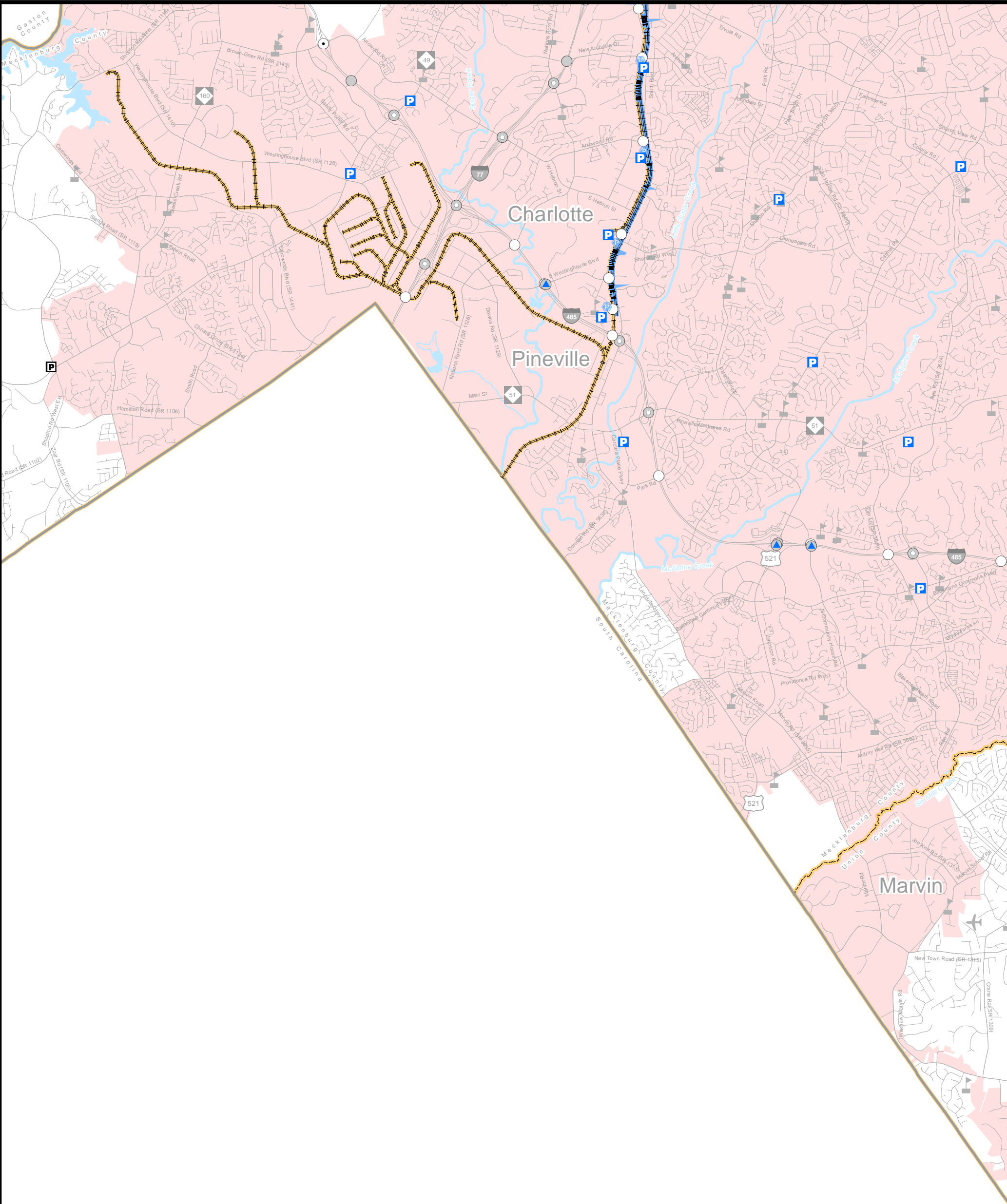
Charlotte Regional Transportation Planning Organization

North Carolina

## Comprehensive Transportation Plan

Plan date: January 18, 2017  
Revision date: October 17, 2018





<b>High Speed Rail Corridor</b> Existing Recommended	<b>Fixed Guideway</b> Existing Needs Improvement Recommended	<b>Rail Corridor</b> Active Inactive Recommended
<b>Operational Strategies</b> Existing Needs Improvement Recommended	<b>Stations</b> Existing Needs Improvement Recommended	<b>Stations with Park and Ride Lot</b> Existing Needs Improvement Recommended
<b>Bus Park and Ride Lot</b> Existing Needs Improvement Recommended	<b>Intermodal Connector</b> Existing Recommended	<b>Interchanges with Managed Lanes Access</b> Existing Needs Improvement Recommended
<b>Grade Separations</b> Existing Needs Improvement Recommended	<b>Interchanges</b> Existing Needs Improvement Recommended	

0 0.5 1 2 Miles

Sheet 3F of 5

Base map date: January 4, 2017

Refer to CTP document for more details

**Public Transportation and Rail Map Inset F**

AMENDED

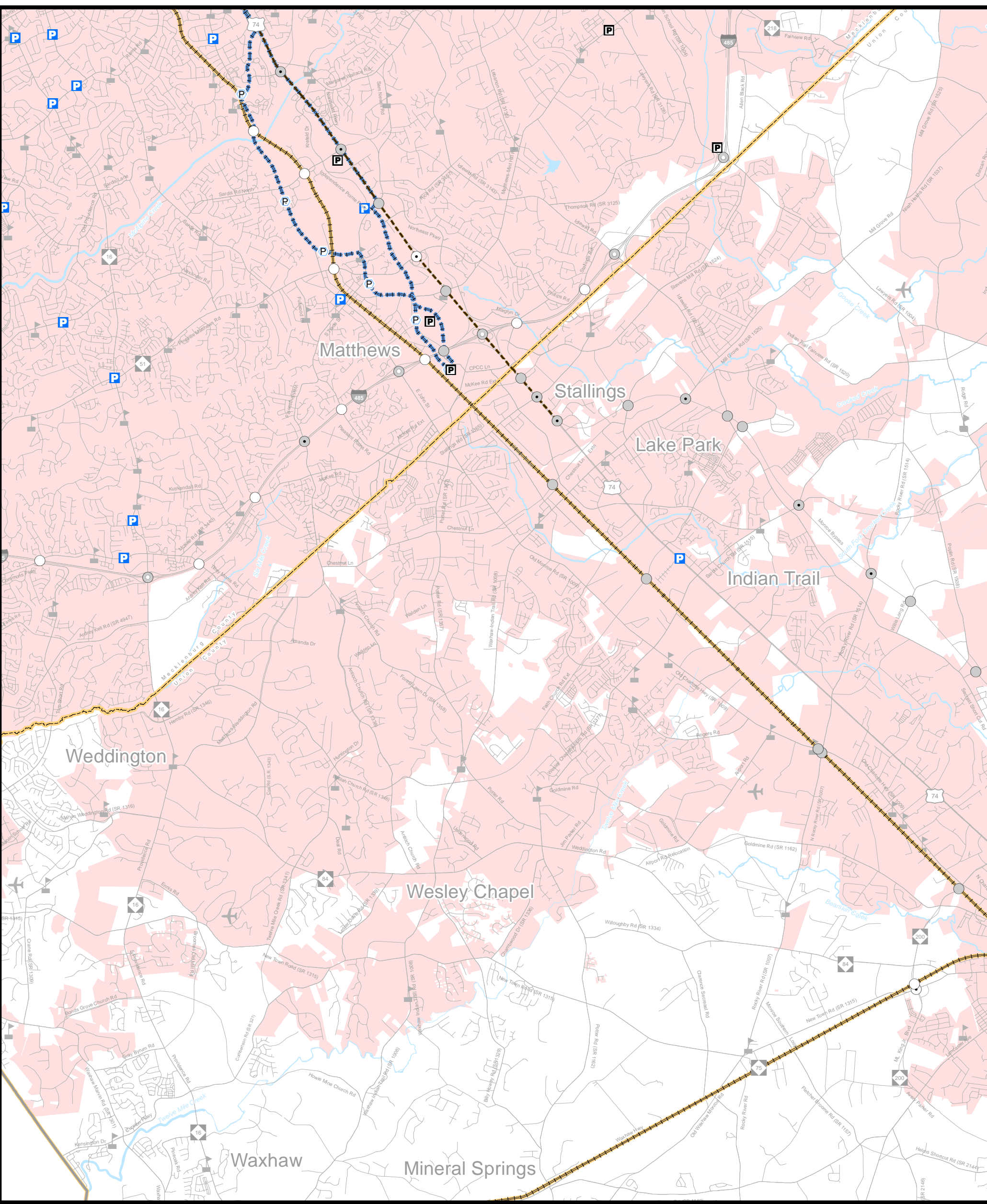
**Charlotte Regional Transportation Planning Organization**

North Carolina

**Comprehensive Transportation Plan**

Plan date: January 18, 2017  
Revision date: October 17, 2018





<b>High Speed Rail Corridor</b>	<b>Fixed Guideway</b>	<b>Rail Corridor</b>
Existing	Existing	Active
Recommended	Needs Improvement	Inactive
	Recommended	Recommended
<b>Operational Strategies</b>	<b>Stations</b>	<b>Stations with Park and Ride Lot</b>
Existing	Existing	Existing
Needs Improvement	Needs Improvement	Needs Improvement
Recommended	Recommended	Recommended
<b>Bus Park and Ride Lot</b>	<b>Intermodal Connector</b>	<b>Interchanges with Managed Lanes Access</b>
Existing	Existing	Existing
Needs Improvement	Recommended	Needs Improvement
Recommended		Recommended
<b>Grade Separations</b>	<b>Interchanges</b>	
Existing	Existing	
Needs Improvement	Needs Improvement	
Recommended	Recommended	

0 0.5 1 2 Miles

Sheet 3G of 5

Base map date: January 4, 2017

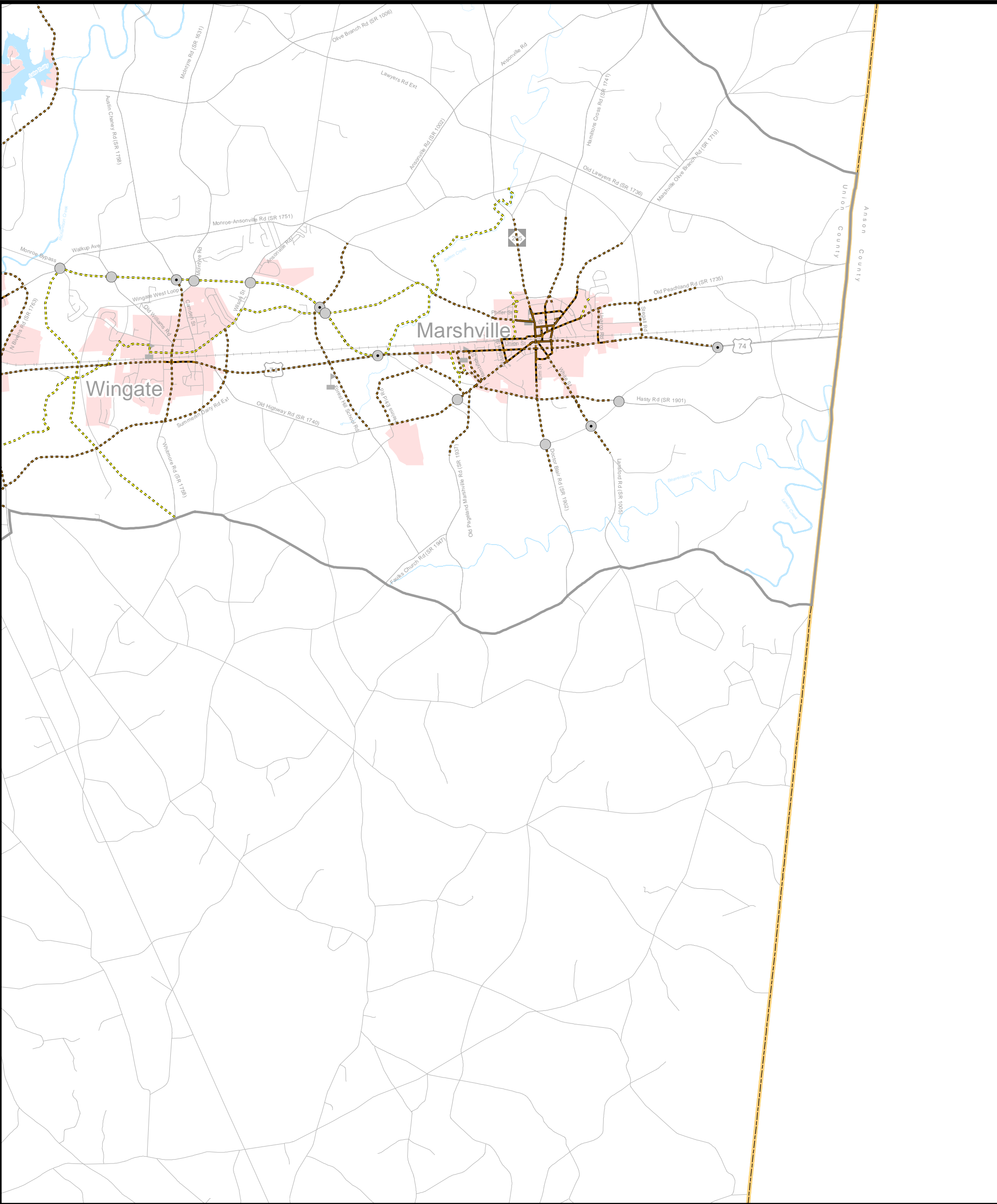
Refer to CTP document for more details

**Public Transportation and Rail Map Inset G**

**AMENDED**  
**Charlotte Regional Transportation Planning Organization**  
 North Carolina

**Comprehensive Transportation Plan**  
 Plan date: January 18, 2017  
 Revision date: October 17, 2018





**Sidewalks**

- Existing
- Needs Improvement
- Recommended

**Grade Separations**

- Existing
- Needs Improvement
- Recommended

**Interchanges with Managed Lanes Access**

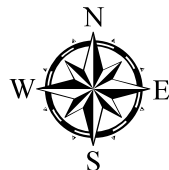
- Existing
- Needs Improvement
- Recommended

**Multi-Use Paths**

- Existing
- Needs Improvement
- Recommended

**Interchanges**

- Existing
- Needs Improvement
- Recommended



Sheet 50 of 5

Base map date: January 4, 2017

Refer to CTP document for more details

**Pedestrian Map**

**Inset O**



**AMENDED**

**Charlotte Regional Transportation Planning Organization**

North Carolina

**Comprehensive**

**Transportation Plan**

Plan date: January 18, 2017

Revision date: October 17, 2018